

PLASTIC BELT CONVEYOR QUOTATION WORKSHEET

Company _____ Date _____
 Contact _____ Quote Due _____ Desired Delivery _____
 Phone No. _____ Contact Email _____ State _____
 Ultimation Sales Contact _____ Quote # _____
 Quantity _____

Product Specs:

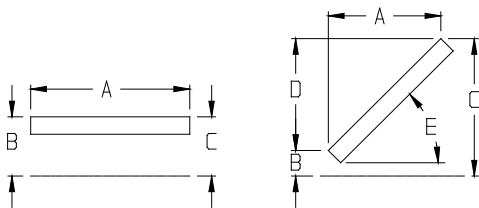
Max:
 - Width (inches): _____ Length (inches): _____
 - Height (inches): _____ Weight (lbs): _____
 Min:
 - Width (inches): _____ Length (inches): _____
 - Height (inches): _____ Weight (lbs): _____
 Description: _____
 Max. Qty.: _____ Total Live Load*: _____
 Temperature
 -Environment: _____
 -Product: _____
 Wet Dry Other _____

Conveyor Construction:

Welded
 Painted Epoxy Painted
 Powder Coated Color RAL: _____
 Stainless Steel
 Mill Finish Polished
 Bolt-Together Galvanized
 Bed Type: Slider Bed Open Style Slider Bed

Conveyor Orientation:

Horizontal Incline Decline
 A = ____' - ____" Horizontal Overall Length
 B = ____' - ____" Top of Belt
 C = ____' - ____" Top of Belt
 D = ____' - ____: Elevation Change
 E = ____' - ____" Degree (Approx.)



Curve: _____" Inside Radius
 Degree of Curve 45 90 180 Other _____
 Curve tangent typically (2x) the belt width. (Minimum 24")

Modular Plastic Belt Specs:

Belt Width: _____ Inches Belt Style: _____

Application Design Needs:

Stainless Steel Wash Down Sanitary
 Other _____

Application Information:

Product Enters By:
 Conveyed On Fork Truck
 Robot Other _____
 Product Exits By:
 Conveyed off Fork Truck
 Robot Other _____

- Quantity of Starts and Stops per Day _____
 - *Will the Conveyor be started with a load??
 Yes No Soft Start Required?

Support Type:

Legs Ceiling Supports
 None Top of Belt: _____

*Speed:

Fixed (FPM) _____
 Variable Low Speed (FPM) _____
 High Speed (FPM) _____
 AC Speed Controller DC Speed Controller

Drive Type:

Under Hung Shaft Mount Side Mount

Drive Location:

Discharge End Center

Plant Voltage:

110V Single Phase 460V Three Phase
 220V Single Phase 208V Three Phase
 220V Three Phase 575V Three Phase

Other: _____

***Unless otherwise noted Ultimation will assume that conveyors are fully loaded and require soft starts.**

Approval Drawing Required: Yes No